



# DC 2050 Comprehensive Plan ANC 6E Presentation

DC Office of Planning  
Anita Cozart, Director

December, 2025



GOVERNMENT OF THE  
DISTRICT OF COLUMBIA  
**DC MURIEL BOWSER, MAYOR**





# Introductions

**Diamond Thompson-Smith**

Community Planner

[diamond.thompson-smith@dc.gov](mailto:diamond.thompson-smith@dc.gov)

Contact Us!  
[dc2050@dc.gov](mailto:dc2050@dc.gov)

# What Does the DC Office of Planning (OP) Do?

- Develop plans that guide land use and urban design to enhance what makes our neighborhoods unique.
- Analyze projects to ensure they support DC's development goals, follow zoning regulations, and preserve our rich history and culture.
- Advance innovative and equitable policies for citywide systems like housing, transportation, civic facilities, food access, and economic development.



# What is a Comprehensive Plan?

- Outlines a community's **long-range vision** for growth and development.
- Establishes **policies and priorities** that guide the use of land, density of development, and form of buildings.
- Informs **zoning** regulations and **budgeting** for city facilities and infrastructure.



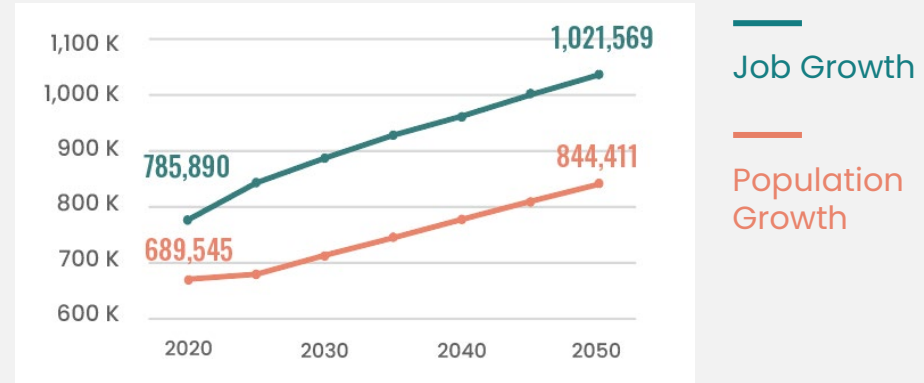
# DC 2050: Why Now?

Our growing city faces increased demand for housing, civic facilities, transportation and environmental protection, as well as changing workplaces.

**DC 2050** will be the District's first new comprehensive plan since 2006.

It will guide how growth and development across all 8 wards can address current challenges and leverage future opportunities.

DC's Projected Population & Job Growth by 2050



Source: Metropolitan Washington Council of Government (MWCOG) Round 10.0 Growth Trends to 2050.

An icon consisting of three stylized human figures standing side-by-side.

+ 145K  
Residents

An icon showing two stylized human figures sitting at desks with computer monitors.

+ 175K  
Jobs

# Timeline

## Phase 1: Define Our Vision ★ March – August 2025

*Gather public feedback on goals, priorities, and areas of interest for DC 2050.*

## Phase 2: Explore Possible Futures | September 2025 – March 2026

*Introduce and gather feedback on citywide growth scenarios.*



## Phase 3: Create Our Plan | April 2026 – June 2027

*Introduce and collect public feedback on the draft of DC 2050.*

## Phase 4: Legislative Approval | July 2027 – February 2028

*DC Council, NCPC, and US Congress consider approval of DC 2050.*

## Phase 5: Make DC 2050 A Reality | 2028 – Future

*District agencies, private sector, and the community take action to achieve the goals and priorities in approved DC 2050.*



Mayoral Launch, The Strand, 3/2



Mary's Center Tabling, Georgia Avenue Clinic, 6/12

## Phase 2: Explore Possible Futures

In Phase 2, we invite you to share ideas on **how the District should grow.**

Your input will shape where new homes and businesses could go, what neighborhoods could look like, and what resources all communities need to thrive.

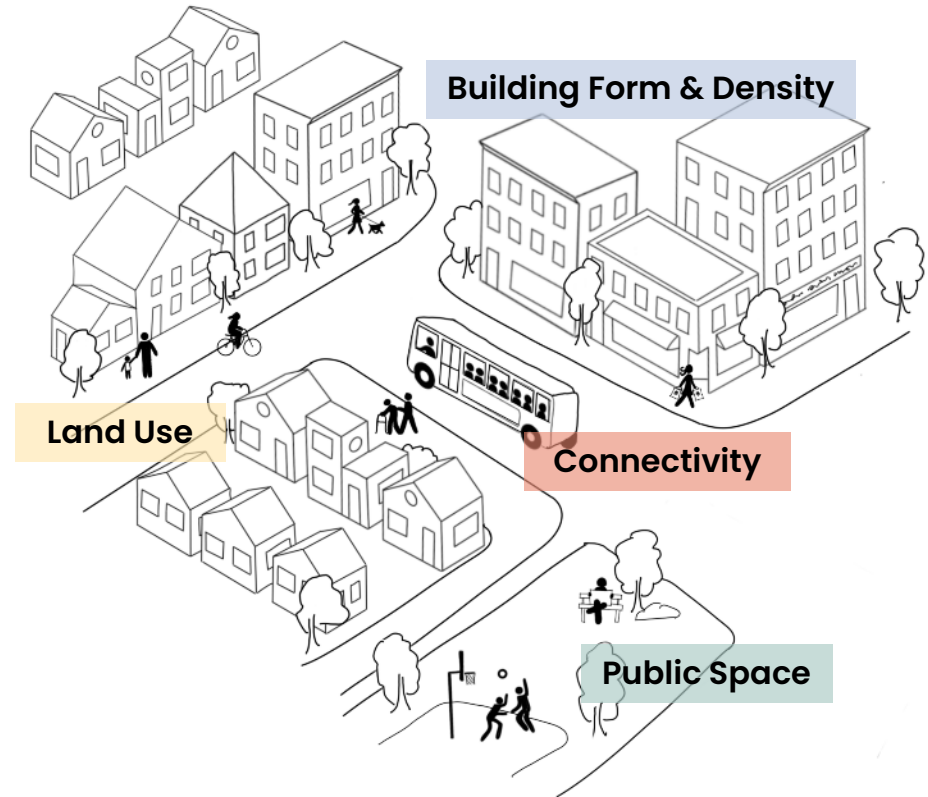
We will frame conversations about how we can grow with a planning approach called **“place types”**.



# What are Place Types?

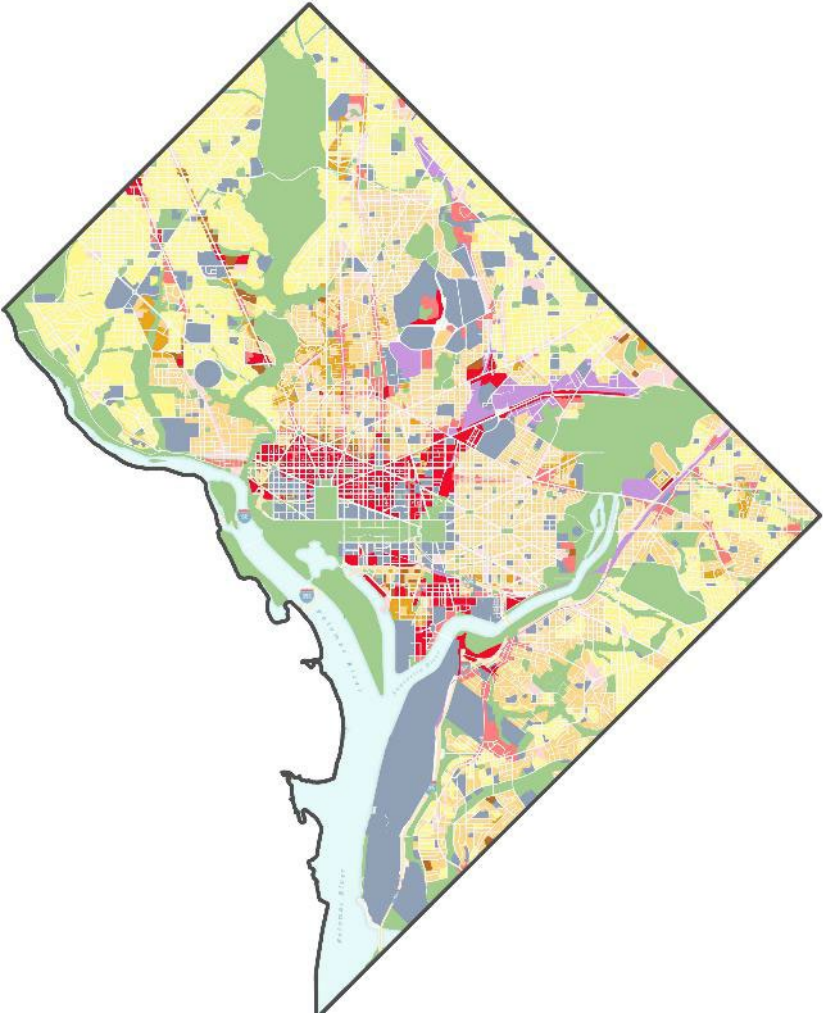
**Place types** are an updated approach to land use policy that make it easier to understand how a property can be used.

Each place type includes policy guidance for a range of topics including use, building form, street connectivity, and public spaces.



# 2021 Future Land Use Map to Place Types Map

Group	Place Types
Residential	Small-Scale Residential Neighborhood
	Moderate-Scale Residential Neighborhood
	Medium-Scale Residential Neighborhood
	Large-Scale Residential Neighborhood
Mixed Uses	Neighborhood Center
	Urban Center
	Regional Center
Other	Industrial
	Institutional
	Parks and Open Space



# Get Involved

## *Explore Possible Futures Virtual Workshop*

Visit a virtual version of our recent in-person workshops for DC 2050 to **explore our updated approach to the District's land use policy**, then tell us your thoughts on where and how the District can accommodate expected growth.

How much time do **YOU** have?

### **5 – 15 minutes**

Add pins on the map in the *"Where Can the District Grow?"* station

### **20 – 30 minutes**

Add pins on the map AND learn about *"How Can The District Grow?"*

### **45 – 60+ minutes**

Explore ALL the stations at your own pace!

# Questions?

## Stay Connected



For more  
information, visit  
our website  
[dc2050.com](https://dc2050.com)



Email us at  
[DC2050@dc.gov](mailto:DC2050@dc.gov)



*Stay up to date &  
join our newsletter!*



DC 2050 Phase 2 Workshop Nov 2025