



450 5th Street, NW



450 5TH STREET, NW

ANC 6E PRESENTATION

AERIAL SITE PHOTO



450 5TH STREET, NW



ANC 6E PRESENTATION

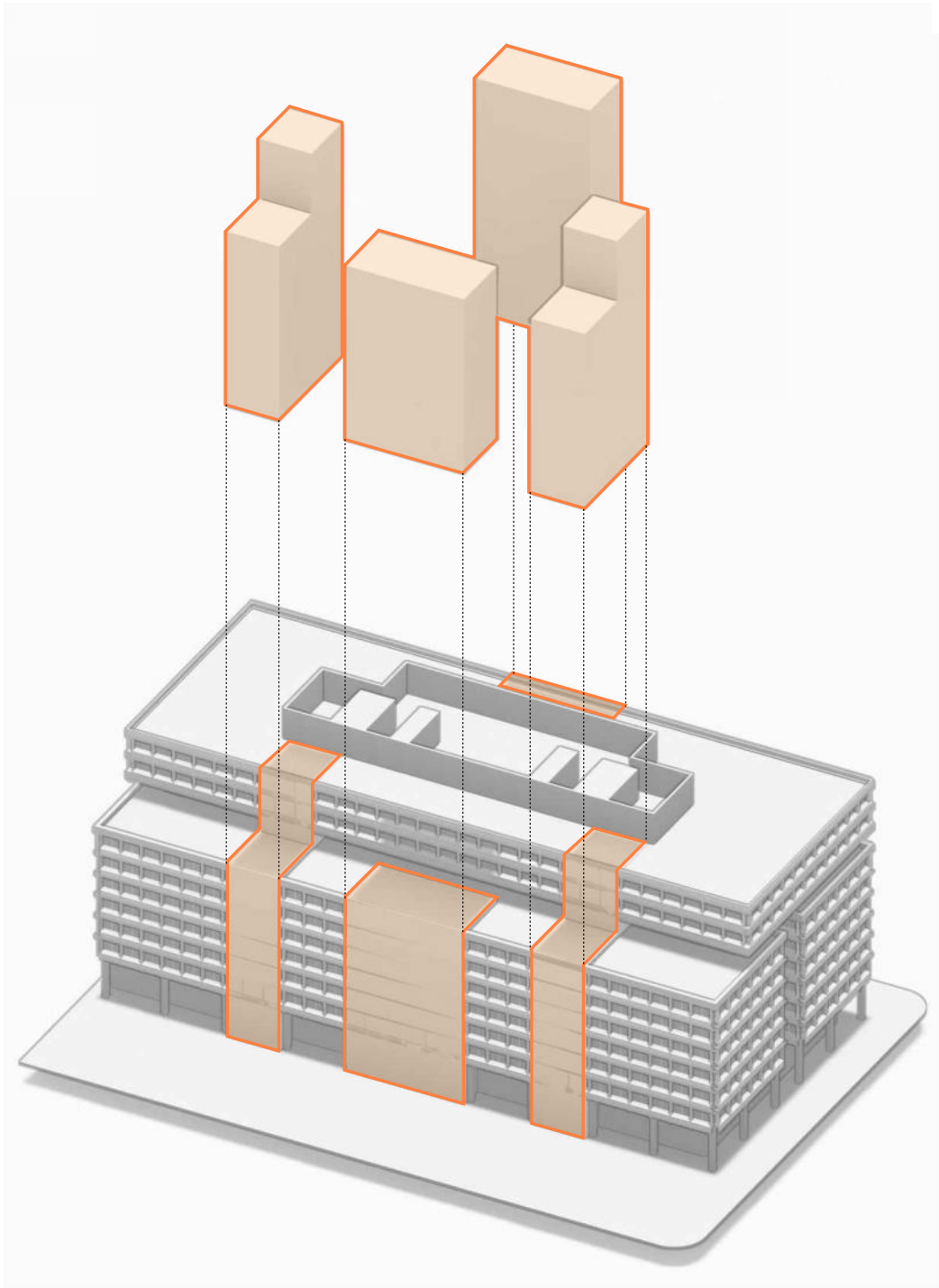


EXISTING BUILDING PHOTOS

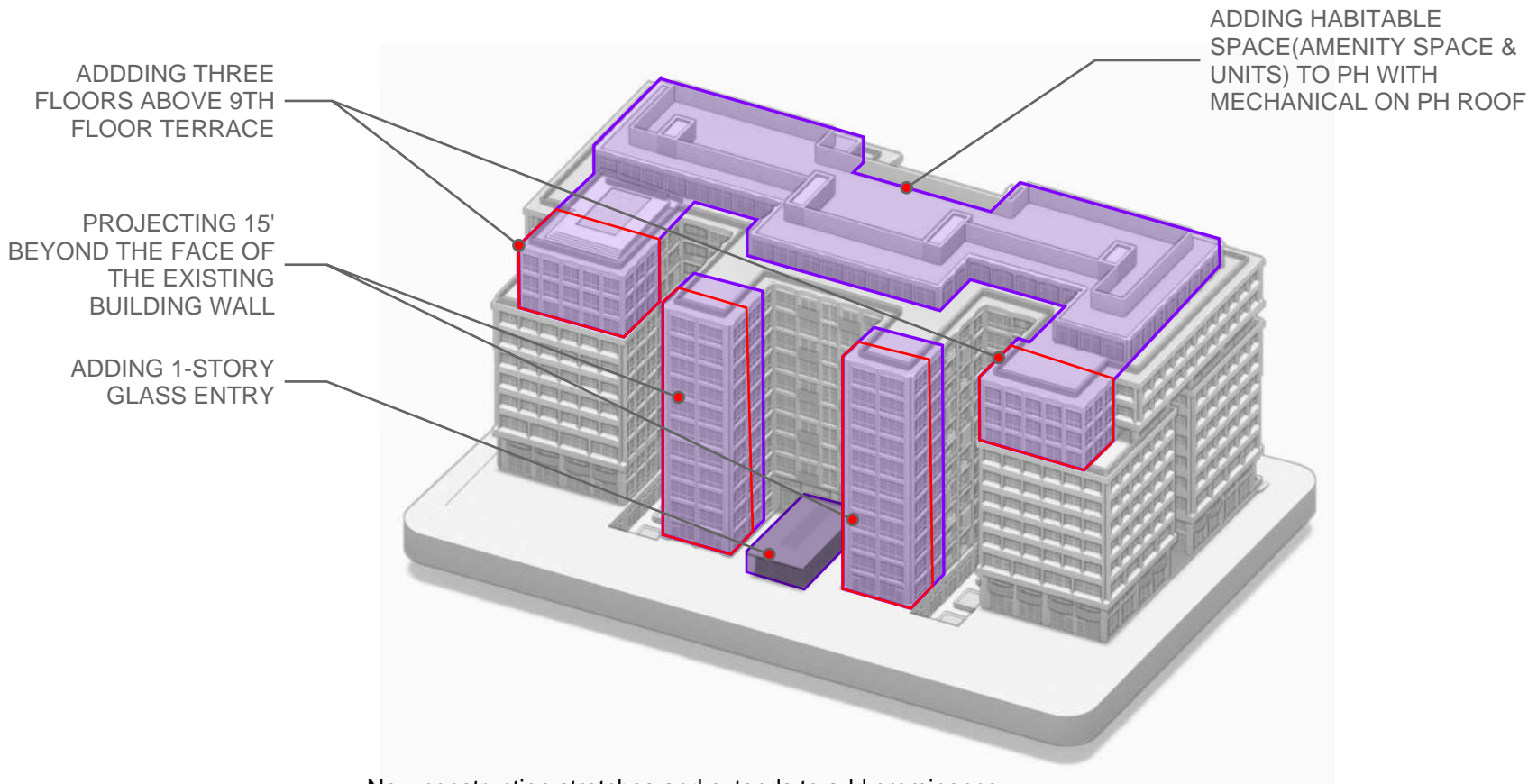
WHAT WE ARE PROPOSING

DESIGN & DEVELOPMENT GOALS:

- 1. To politely but confidently introduce residential use within a civic/government downtown context. And to preserve as much of the existing building and facade as possible.
- 2. To maintain the character of depth and shadow in the existing building and to incorporate similar qualities into the new facades.
- 3. To weave new but classic materials like champagne bronze through the existing and new facades, so the new interventions feel seamless and timeless.
- 4. To add human scale with details like operable windows, balconies and railings.
- 5. To knit the building landscape with the surrounding civic parks. Private residential terraces, garden walls, fences and paving will define public and private realms and will signal that the building is residential.



Portions of the existing building are proposed to be removed to allow for shallower floor depths conducive to apartments with abundant light and air.



New construction stretches and extends to add prominence and to simplify overhangs and setbacks for a more consistent and elegant massing.



450 5TH STREET, NW

ANC 6E PRESENTATION

INTERSECTION OF 5TH & E STREETS FACING SW



450 5TH STREET, NW

ANC 6E PRESENTATION

5TH STREET FROM JUDICIARY PARK

THE GEORGETOWN COMPANY

ECA

June 26, 2025



450 5TH STREET, NW

ANC 6E PRESENTATION

5TH STREET ENTRY FACING WEST



450 5TH STREET, NW

ANC 6E PRESENTATION

6TH STREET ENTRY FACING EAST



450 5TH STREET, NW

ANC 6E PRESENTATION

PRIVATE TERRACE VIEW



450 5TH STREET, NW

ANC 6E PRESENTATION

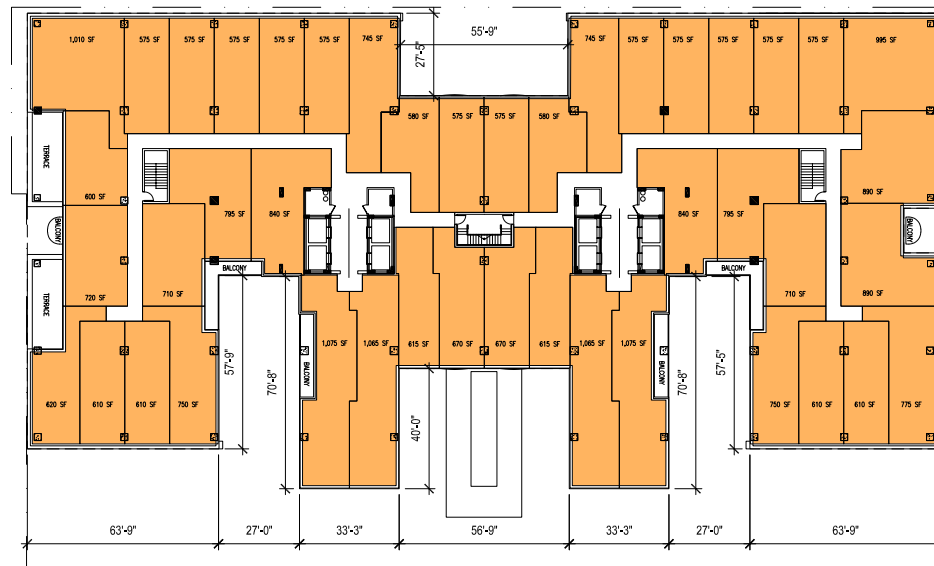
BALCONY VIEW FACING NE OUT OF COURT



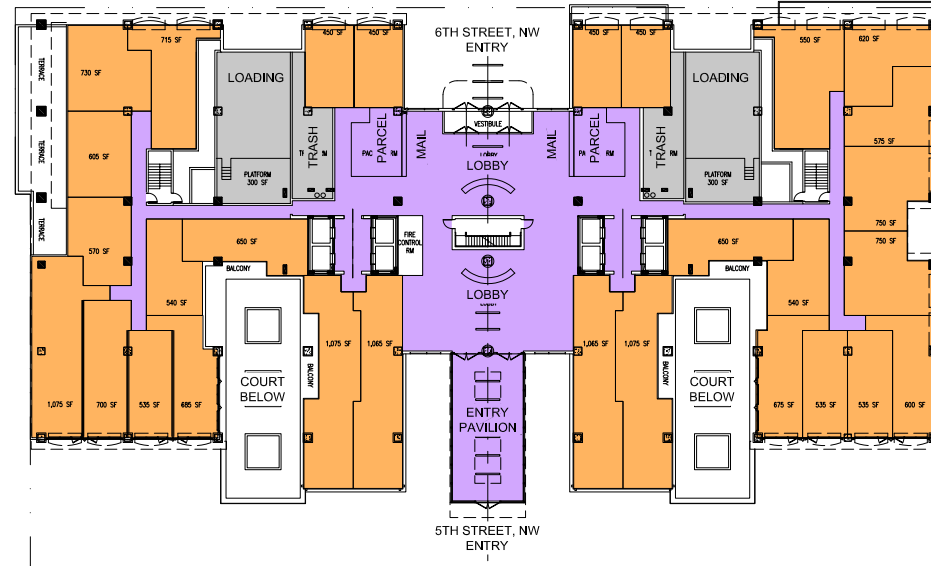
450 5TH STREET, NW

ANC 6E PRESENTATION

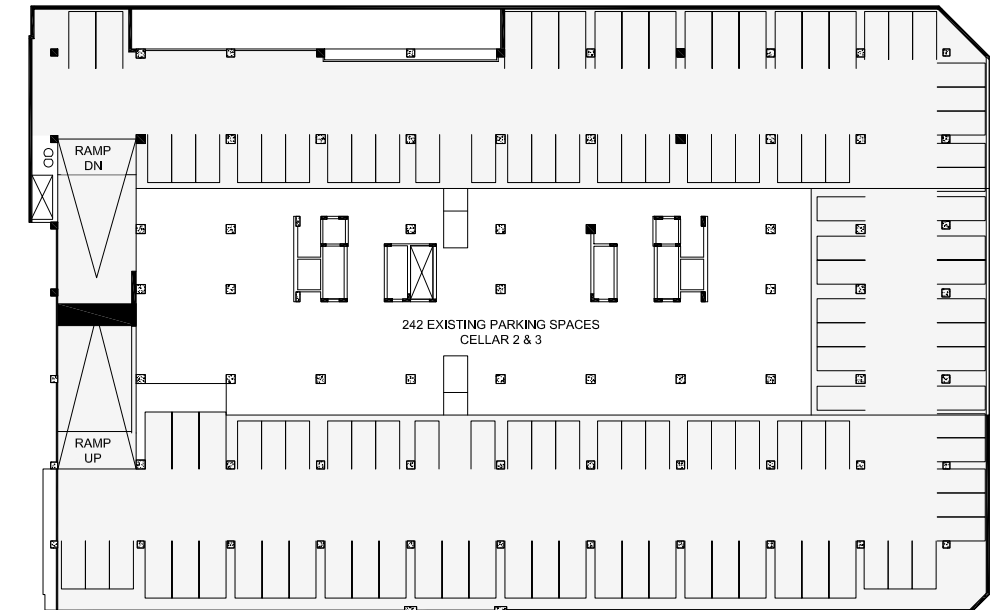
PRIVATE TERRACE VIEW FACING SE



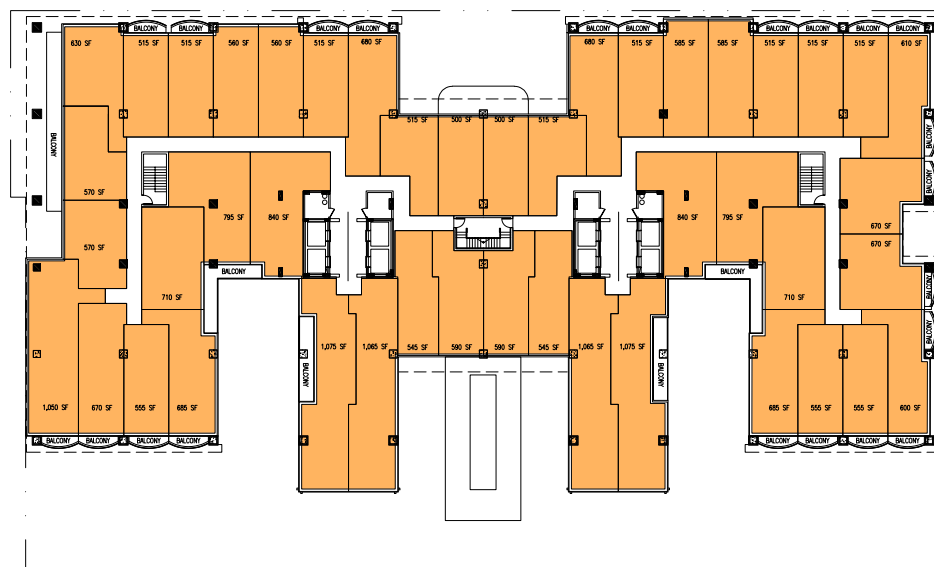
TYPICAL FLOOR (3-8)



1ST FLOOR



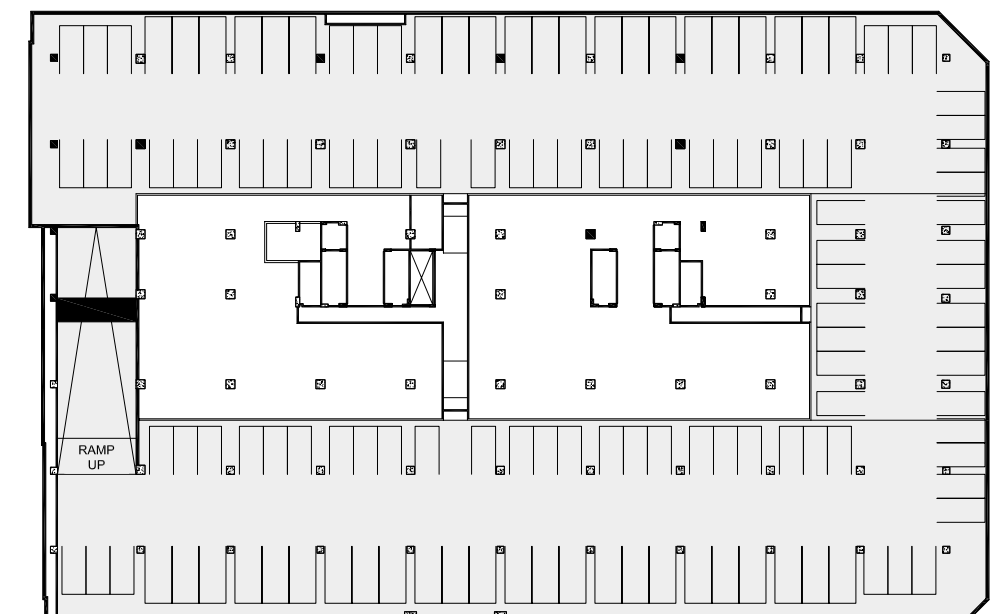
CELLAR 2



2ND FLOOR



CELLAR 1



CELLAR 3





ELEVATION 1 - EAST



ELEVATION 2 - WEST



ELEVATION 3 - NORTH



ELEVATION 4 - SOUTH

