

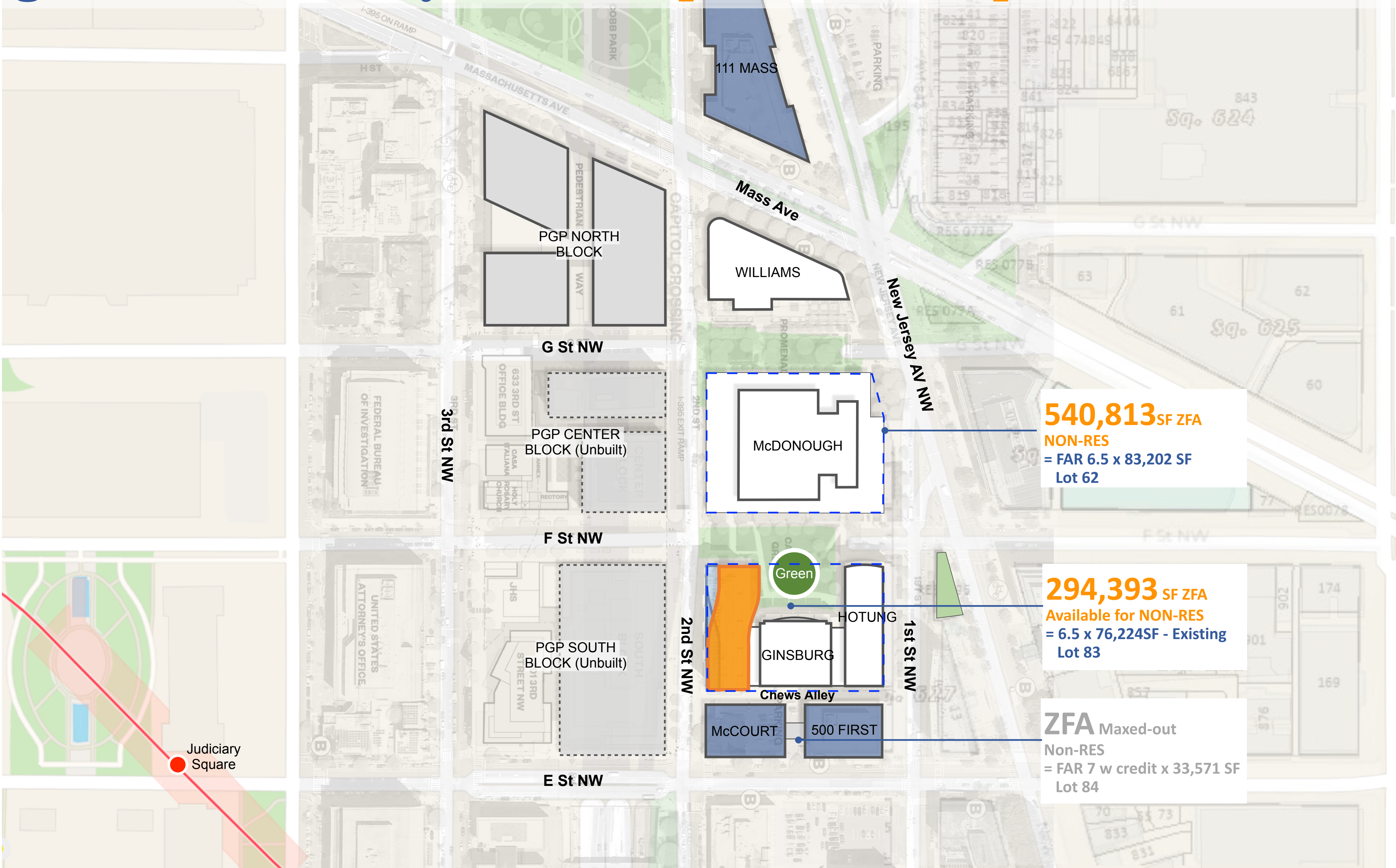
Georgetown University **New Law Building**

ANC Presentation

June 6, 2023

**PEI
COBB
FREED**

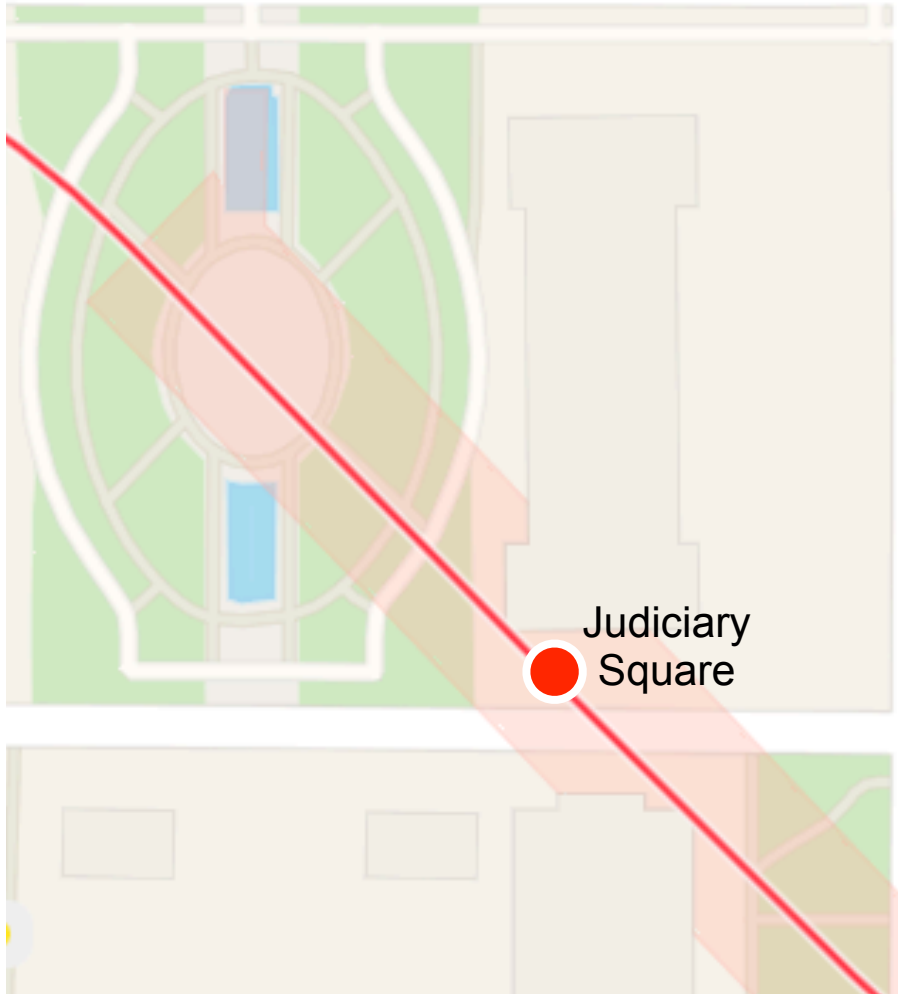
Georgetown University Law Campus Redevelopment



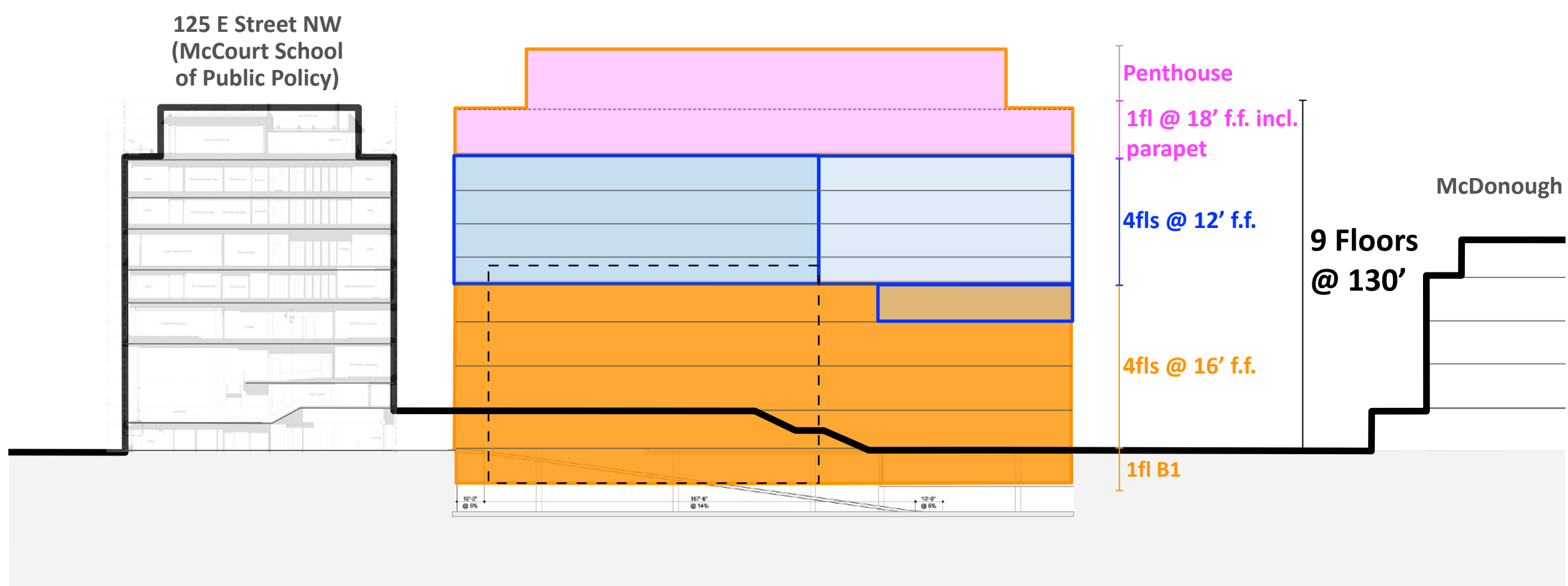
540,813 SF ZFA
NON-RES
 = FAR 6.5 x 83,202 SF
 Lot 62

294,393 SF ZFA
Available for NON-RES
 = 6.5 x 76,224SF - Existing
 Lot 83

ZFA Maxed-out
Non-RES
 = FAR 7 w credit x 33,571 SF
 Lot 84



GU New Law Building Program Stacking



Convening = 27,000 gsf

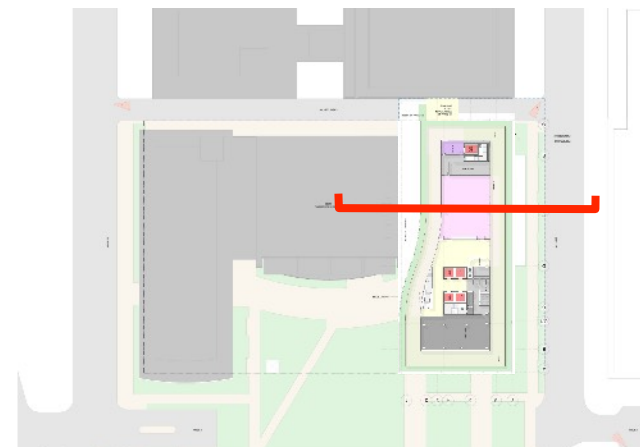
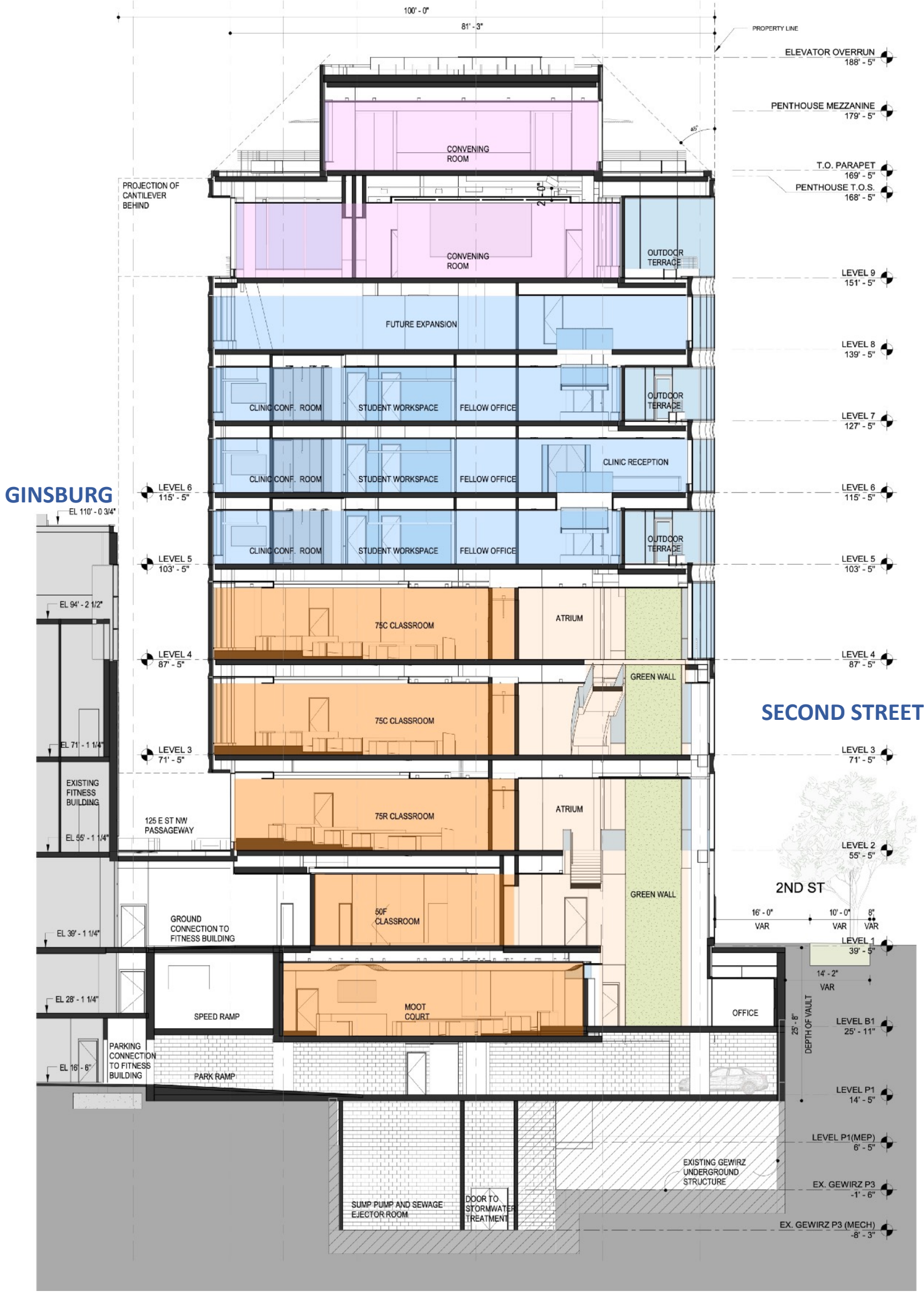
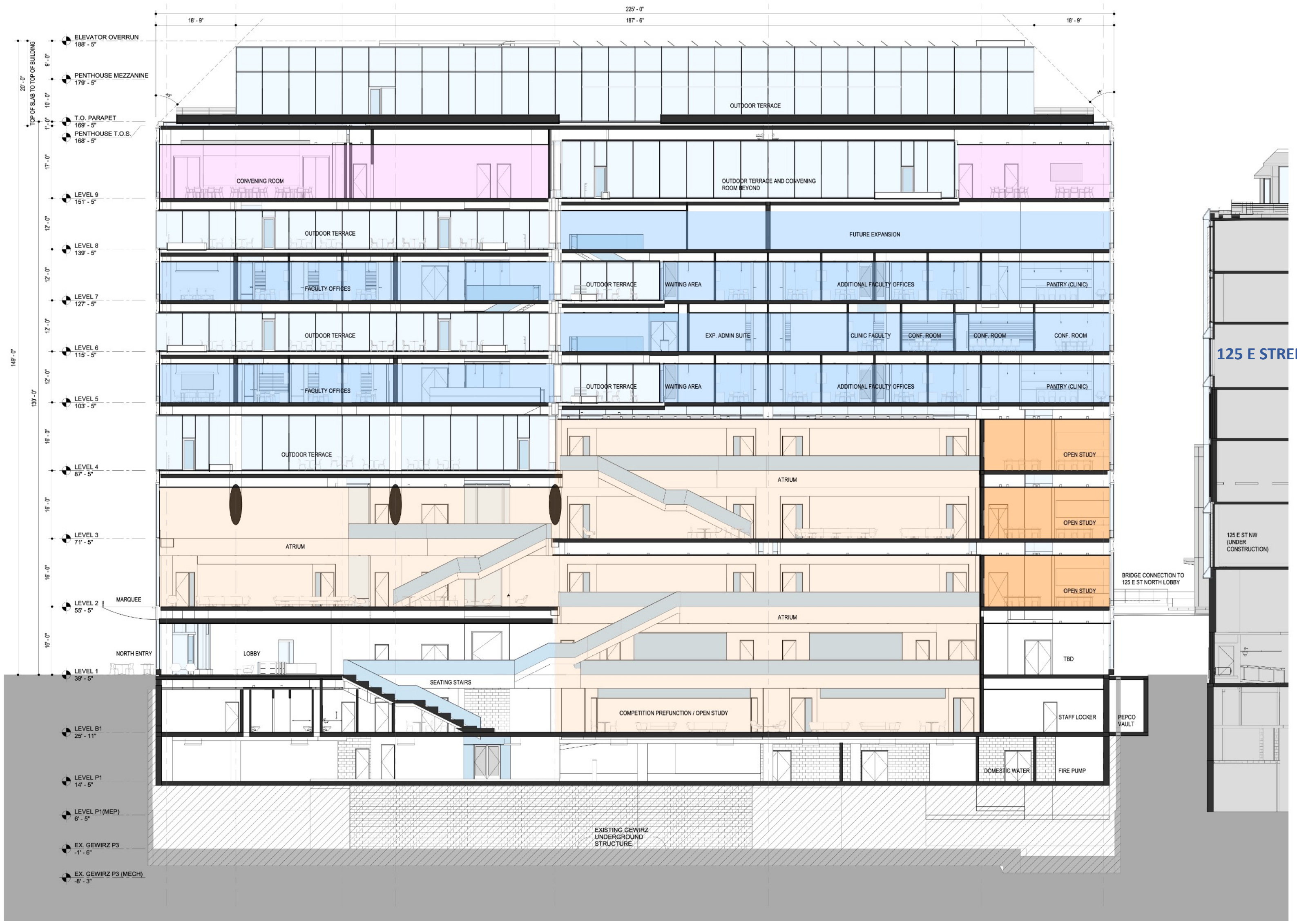
Administrative = 73,000 gsf

Academic = 80,000 gsf

Zoning GFA (L1-L9) = 156,000sf






130': with zoning text amendment
4 office + 5 instructional floors

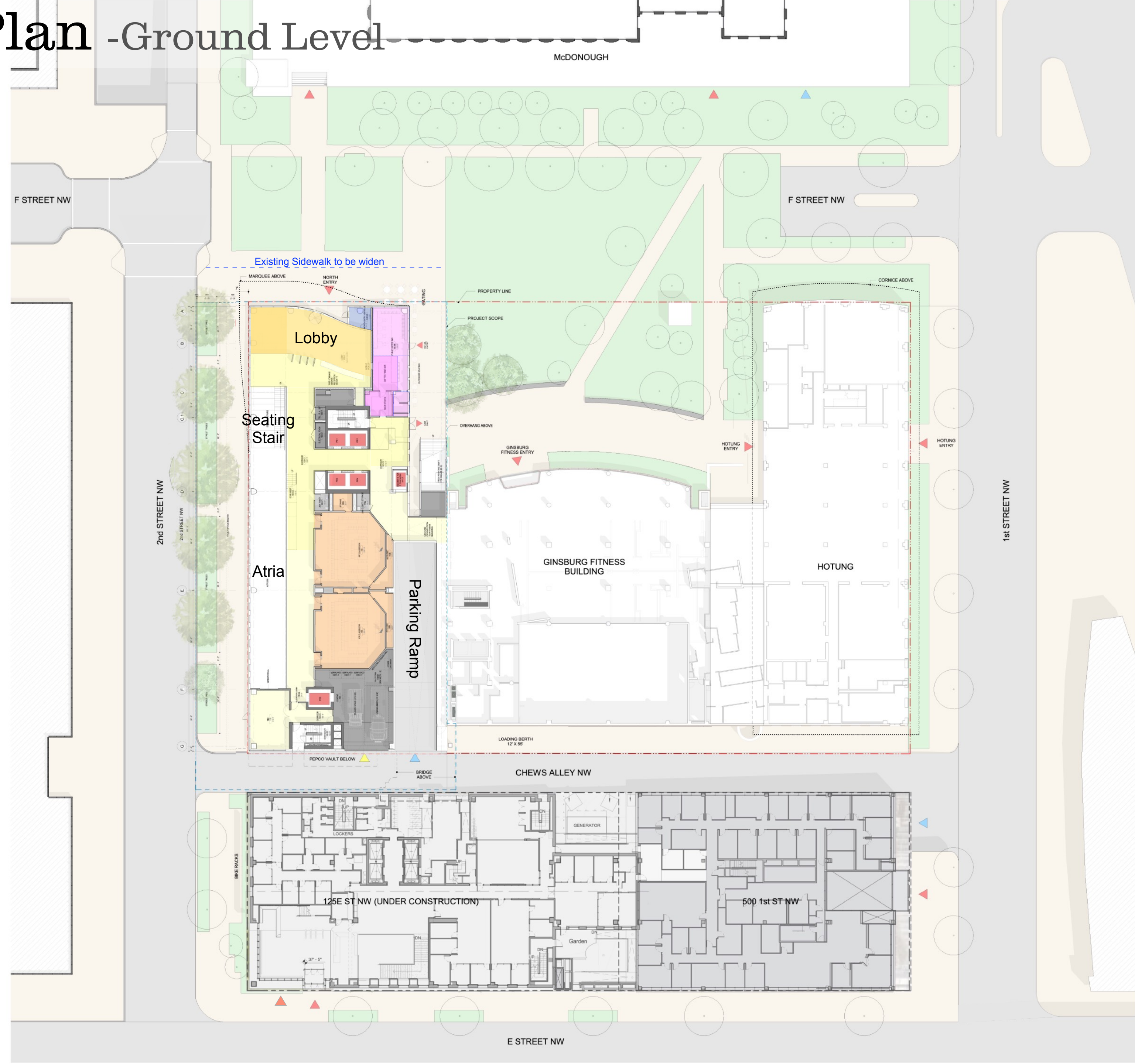
Sections



Circulation Plan - Ground Level

Graphic Legend

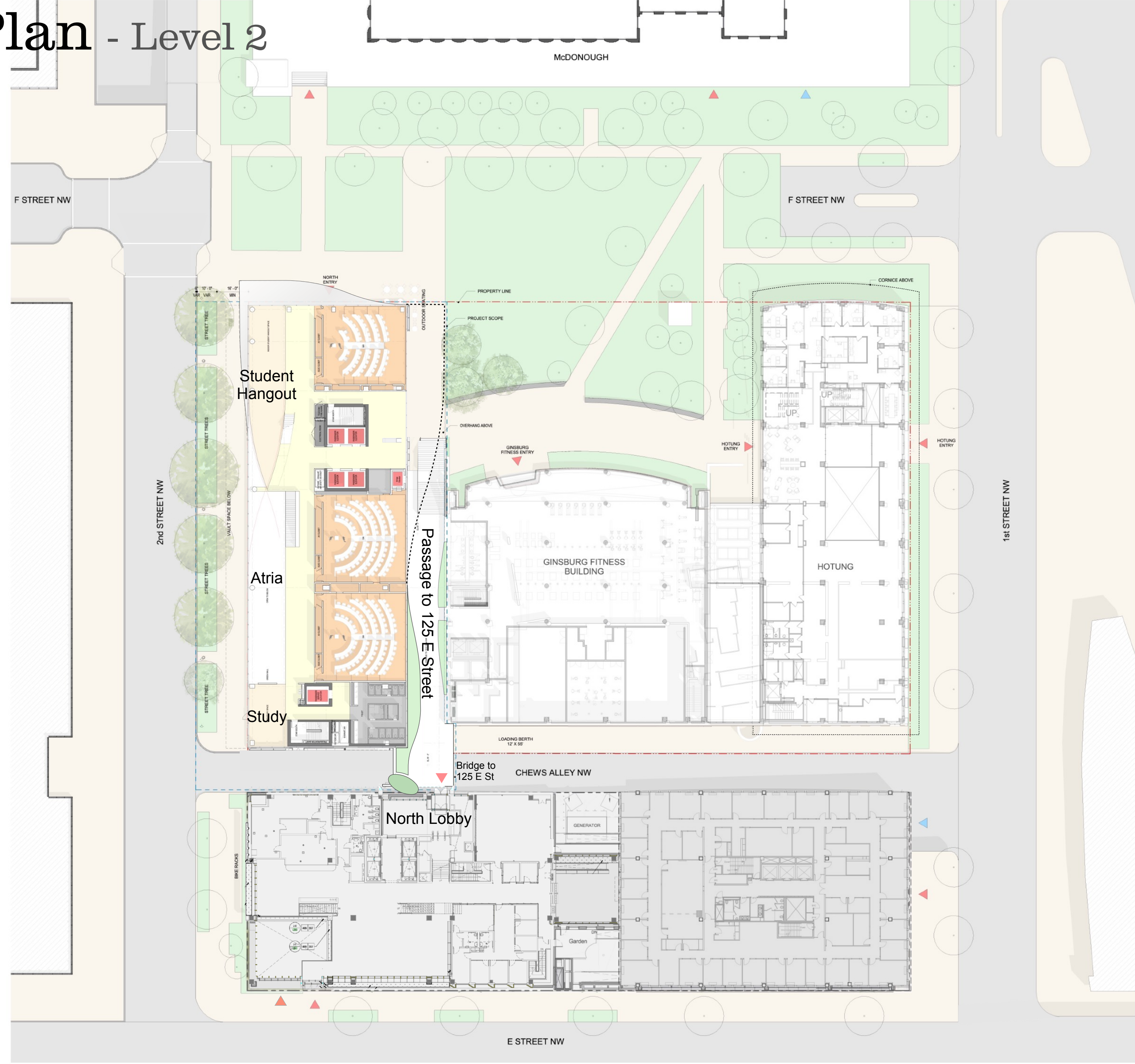
-  Pedestrian Entrance
-  Loading/Delivery Entrance
-  Parking Entrance
-  Street Trees
-  Street Lights



Circulation Plan - Level 2

Graphic Legend

▼ Pedestrian Entrance



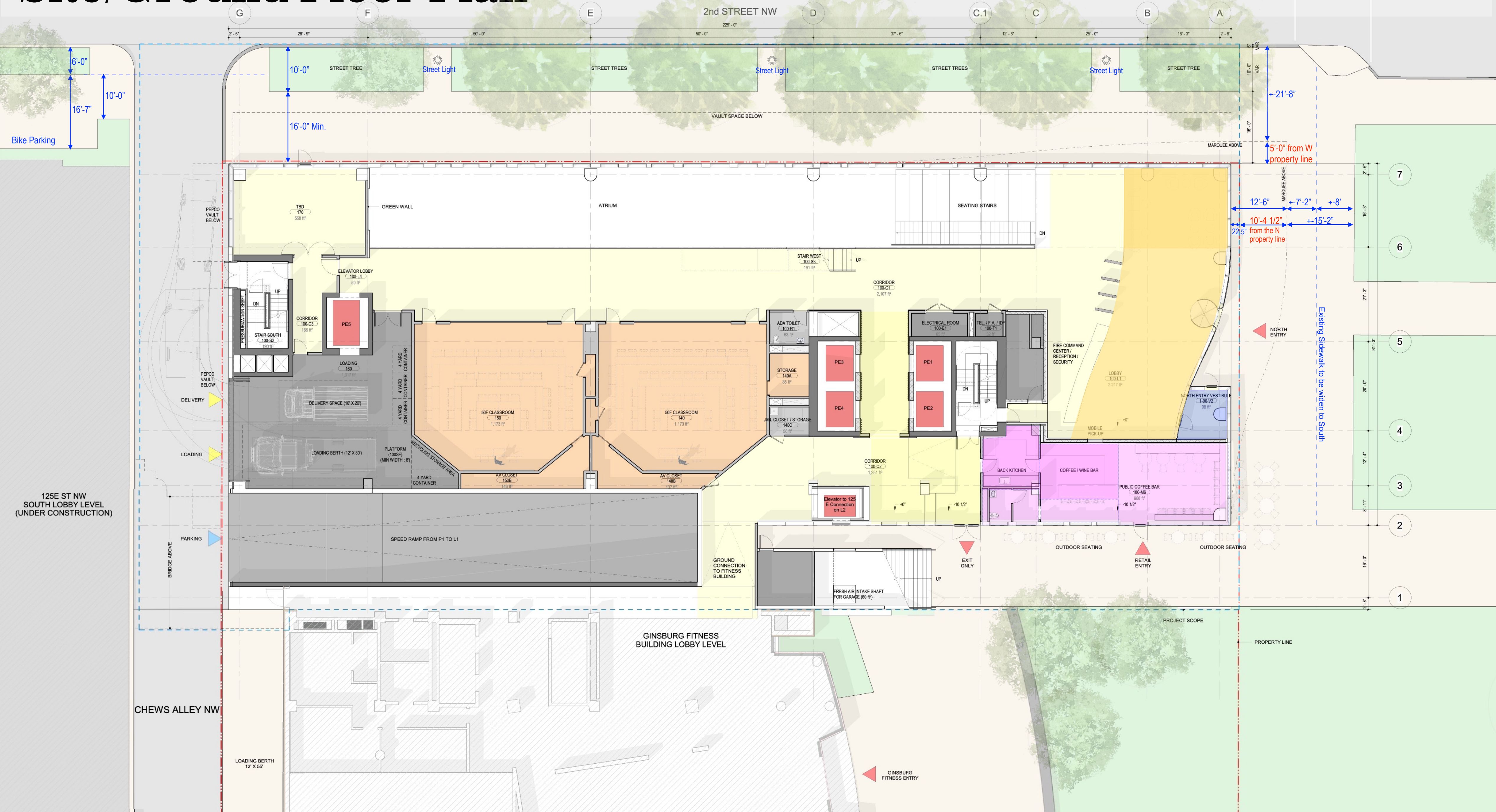
Campus Presence: Day



City Presence: View from the 2nd Street NW



Site/Ground Floor Plan

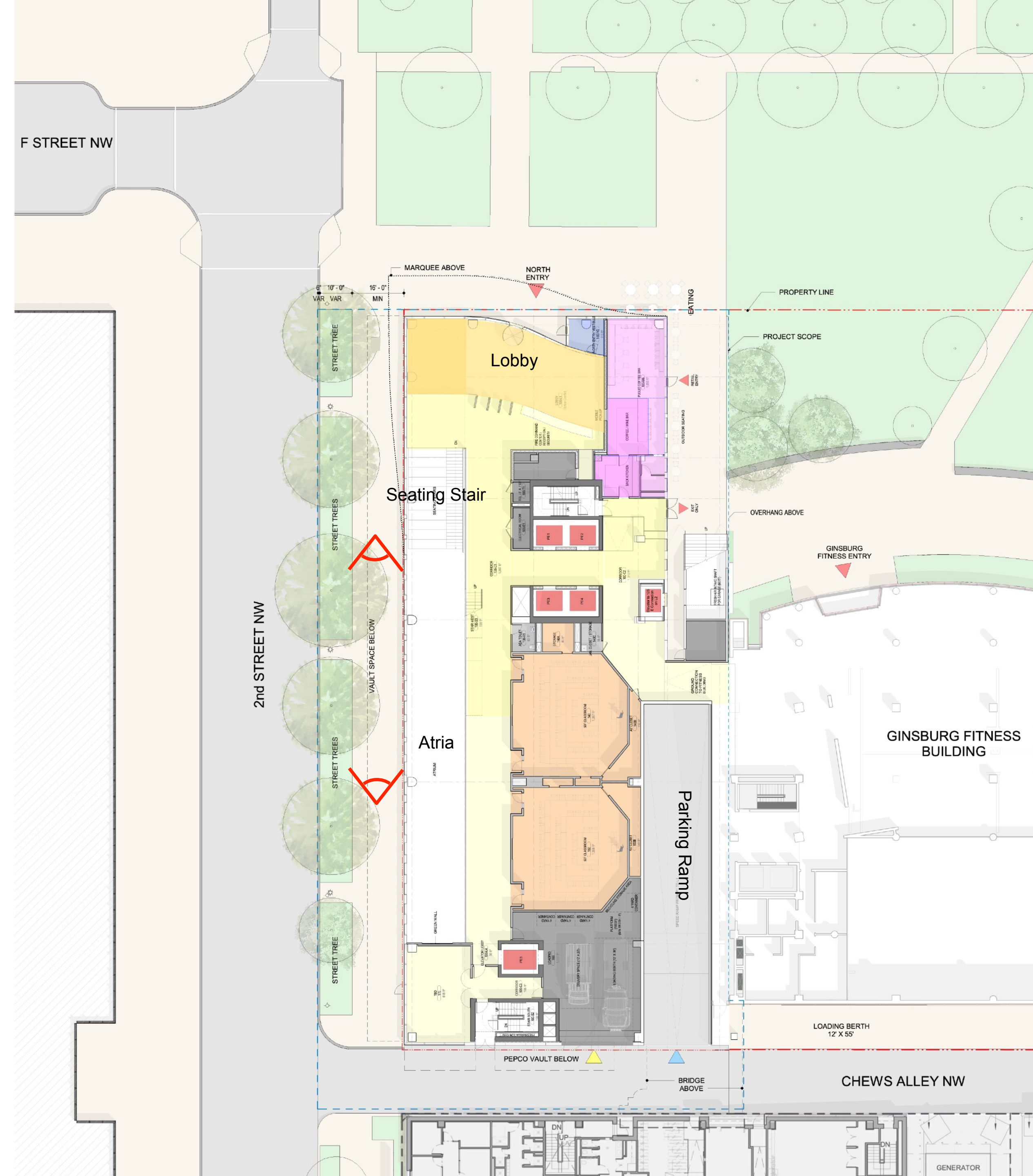


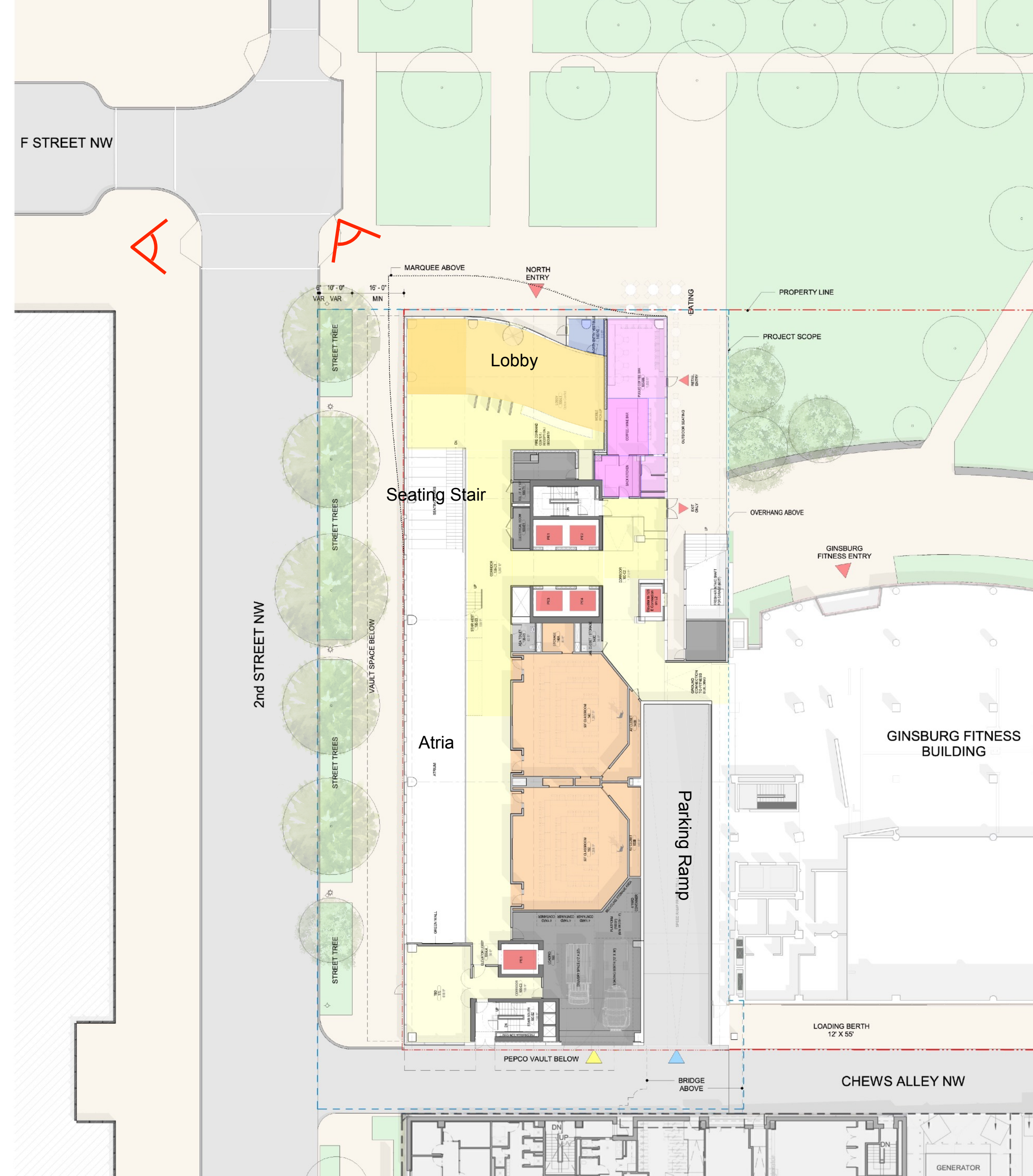
125E ST NW
SOUTH LOBBY LEVEL
(UNDER CONSTRUCTION)

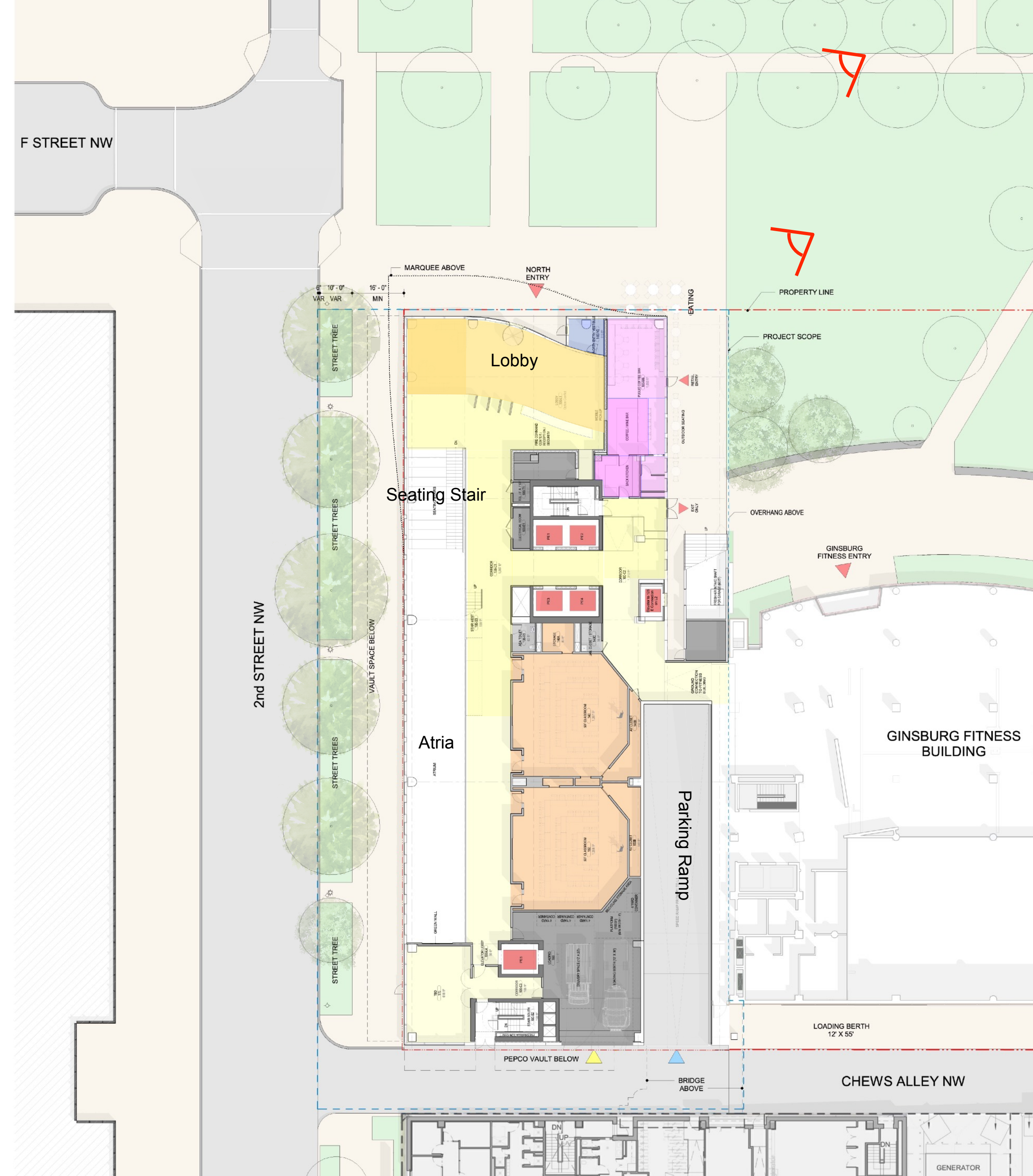
CHEWS ALLEY NW

GINSBURG FITNESS
BUILDING LOBBY LEVEL

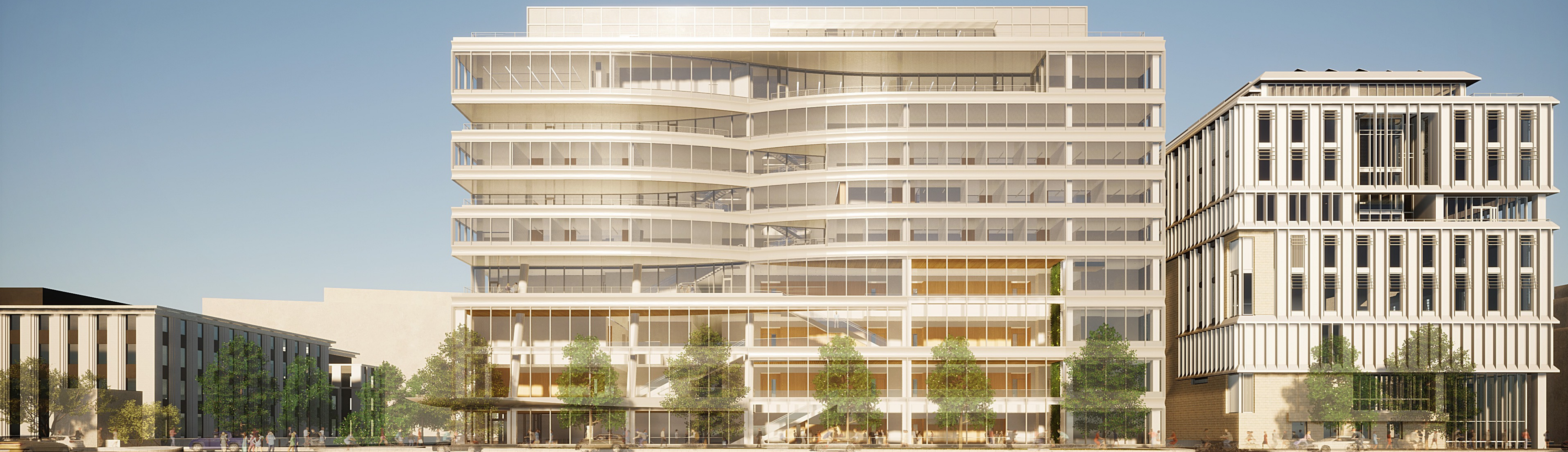
GINSBURG
FITNESS ENTRY







City Presence: West Elevation from 2nd Street



City Presence: Dusk



