



Washington Union Station Expansion Project

ANC 6E General Meeting

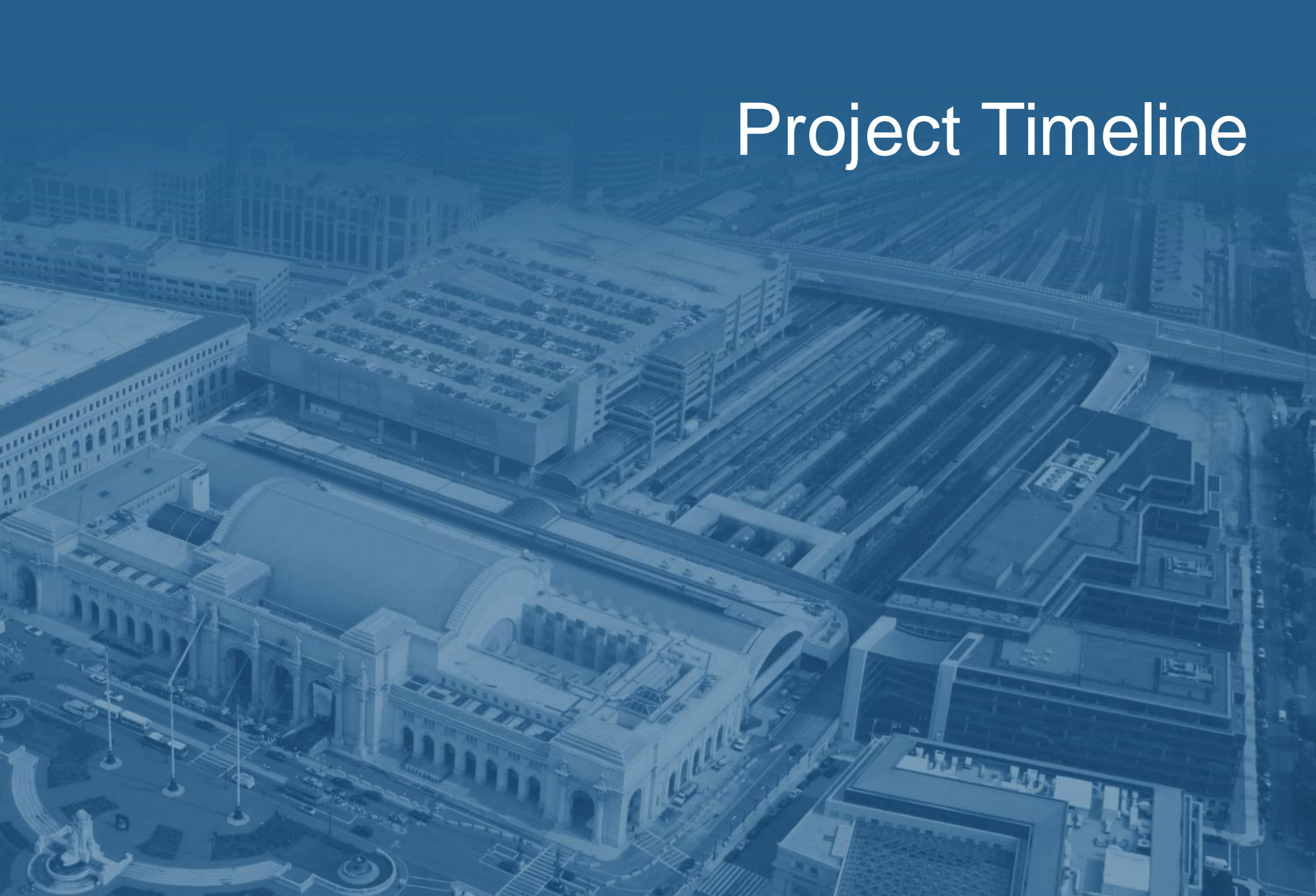
March 14, 2023

Today's Agenda

1. Timeline
2. Overview of the Preferred Alternative
3. Impact Areas Considered in SDEIS
4. Discussion
5. Next Steps



Project Timeline



Through Today

- **Notice of Intent to Prepare an Environmental Impact Statement (EIS): November 1, 2015**
- **Publication and Review of the Draft EIS: June-September 2020**
- **Public Hearing on Draft EIS: July 14, 2020**
- **EIS Pause and Development of Refined Preferred Alternative: October 2020-June 2022**
- **Resumption of Process and Preparation of Supplemental Draft EIS: July 2022-Present (Ongoing)**



Looking Ahead (Anticipated)

- Supplemental Draft EIS Available for 45-day Public Review: **May 19, 2023**
- Public Hearing: **Late June 2023**
- Final EIS and Record of Decision: **January 22, 2024**

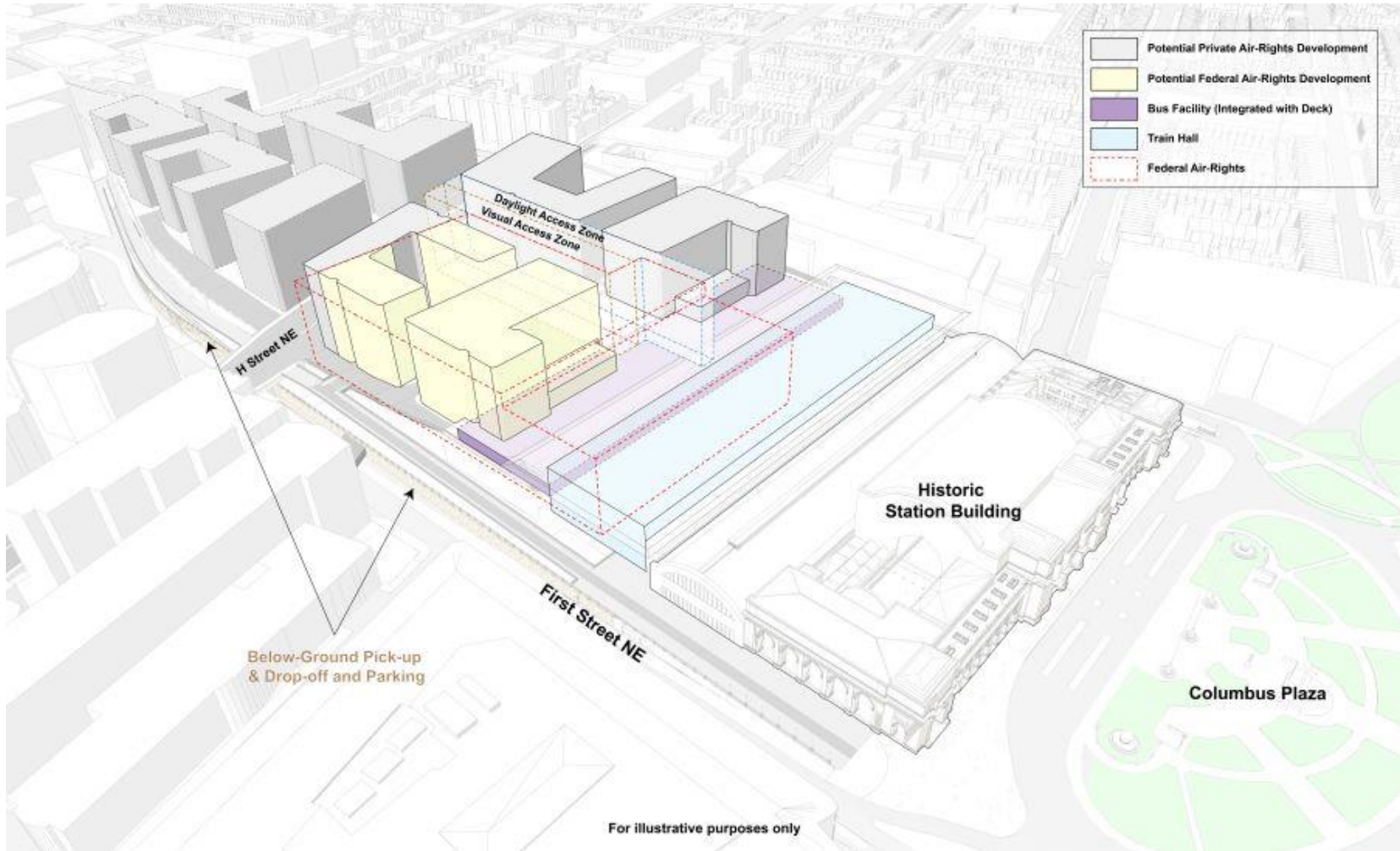
Community Engagement 2023

- Northwest One Library Pop Up: **February 25, 2023**
- Community Communications Committee (CCC) Meeting: **February 28, 2023**
- Next CCC Meeting: **March 28, 2023**

Overview of the Preferred Alternative

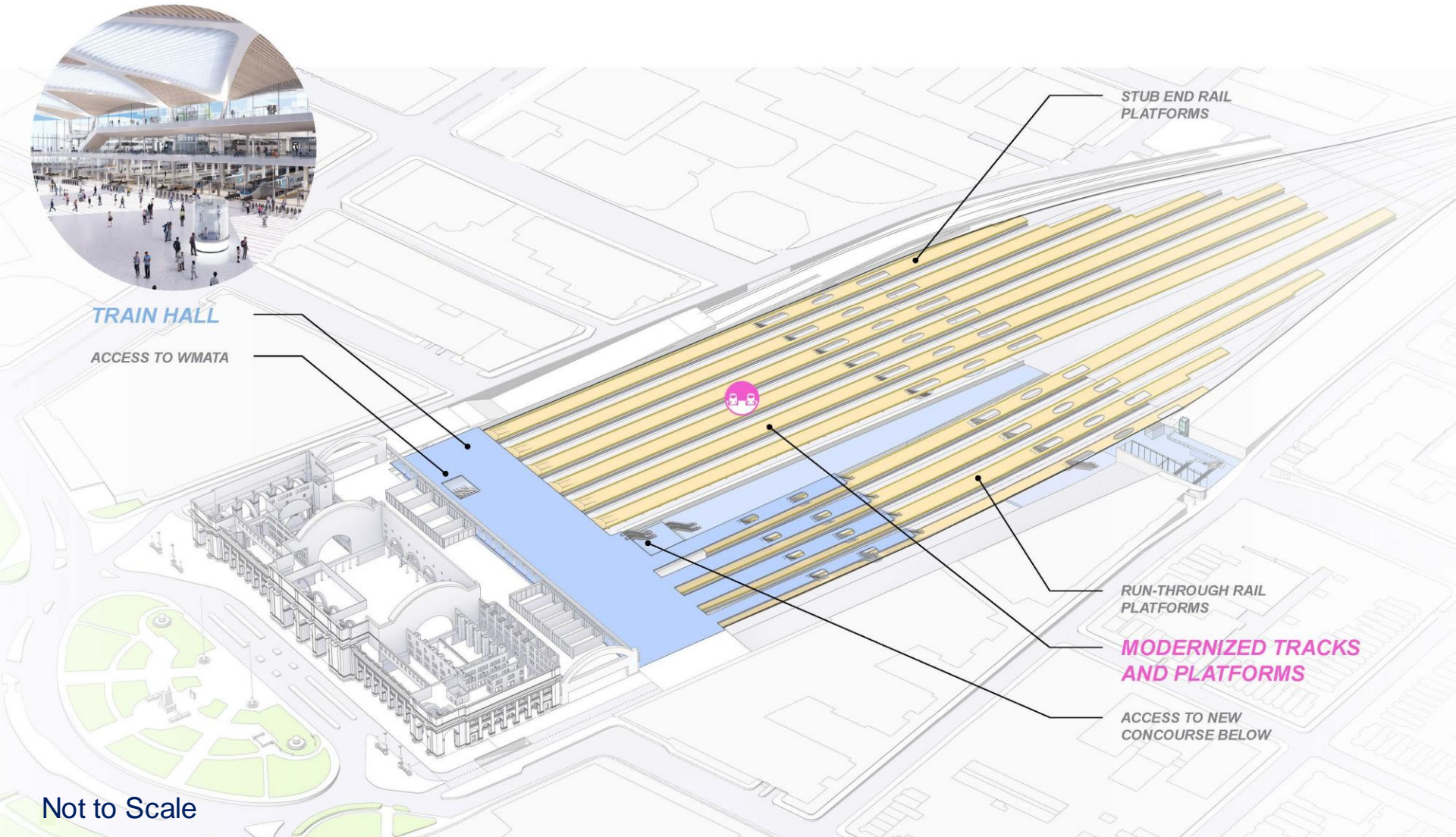


Preferred Alternative



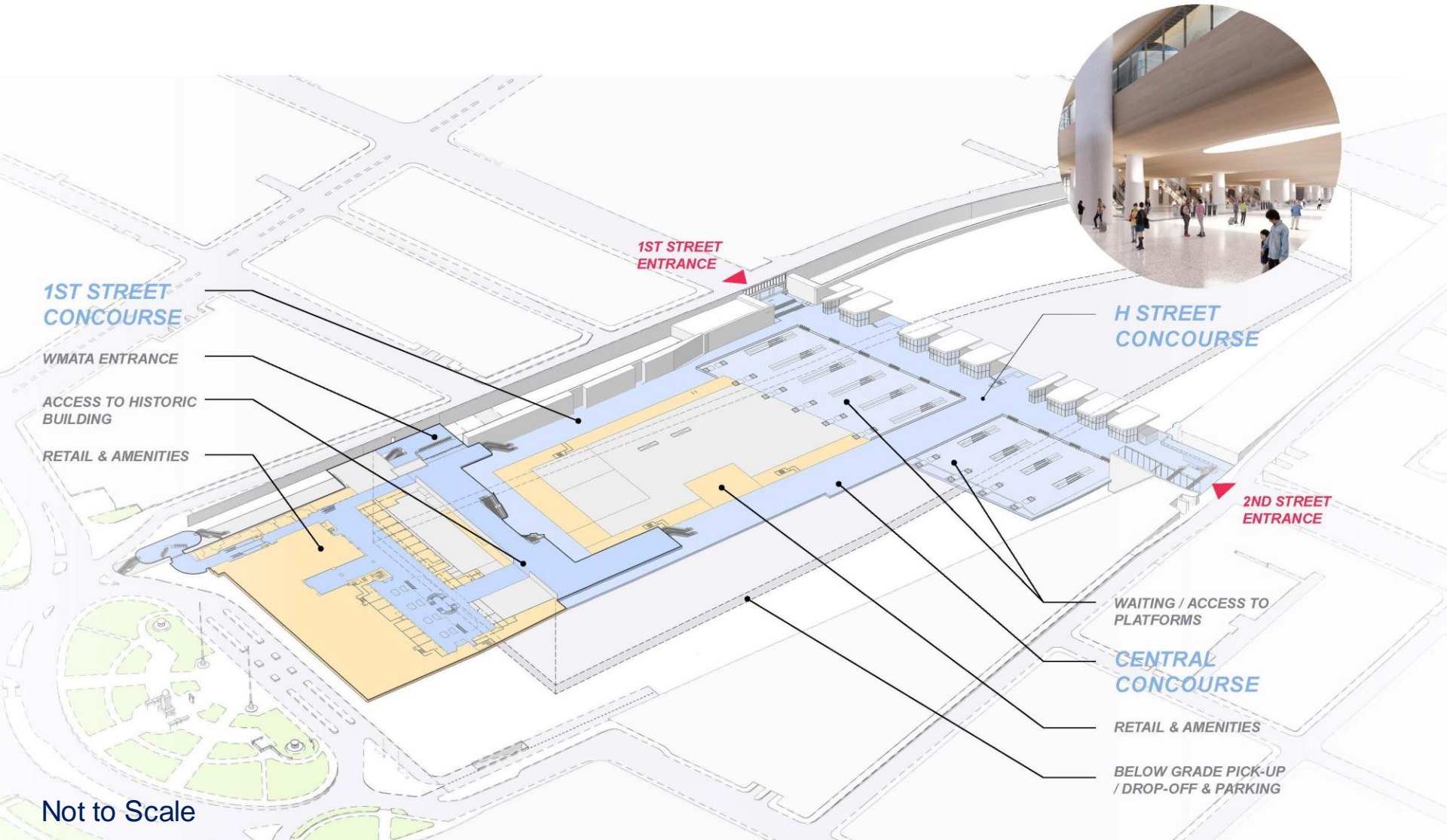
Preferred Alternative

Rail Platform Level Axon



Preferred Alternative

Lower Concourse Level Axon



Preferred Alternative

H Street Concourse - Looking Southwest



Preferred Alternative

Bus Facility Level Axon



BUS FACILITY

TRAIN HALL

Not to Scale



Preferred Alternative

Bus Facility- Looking East



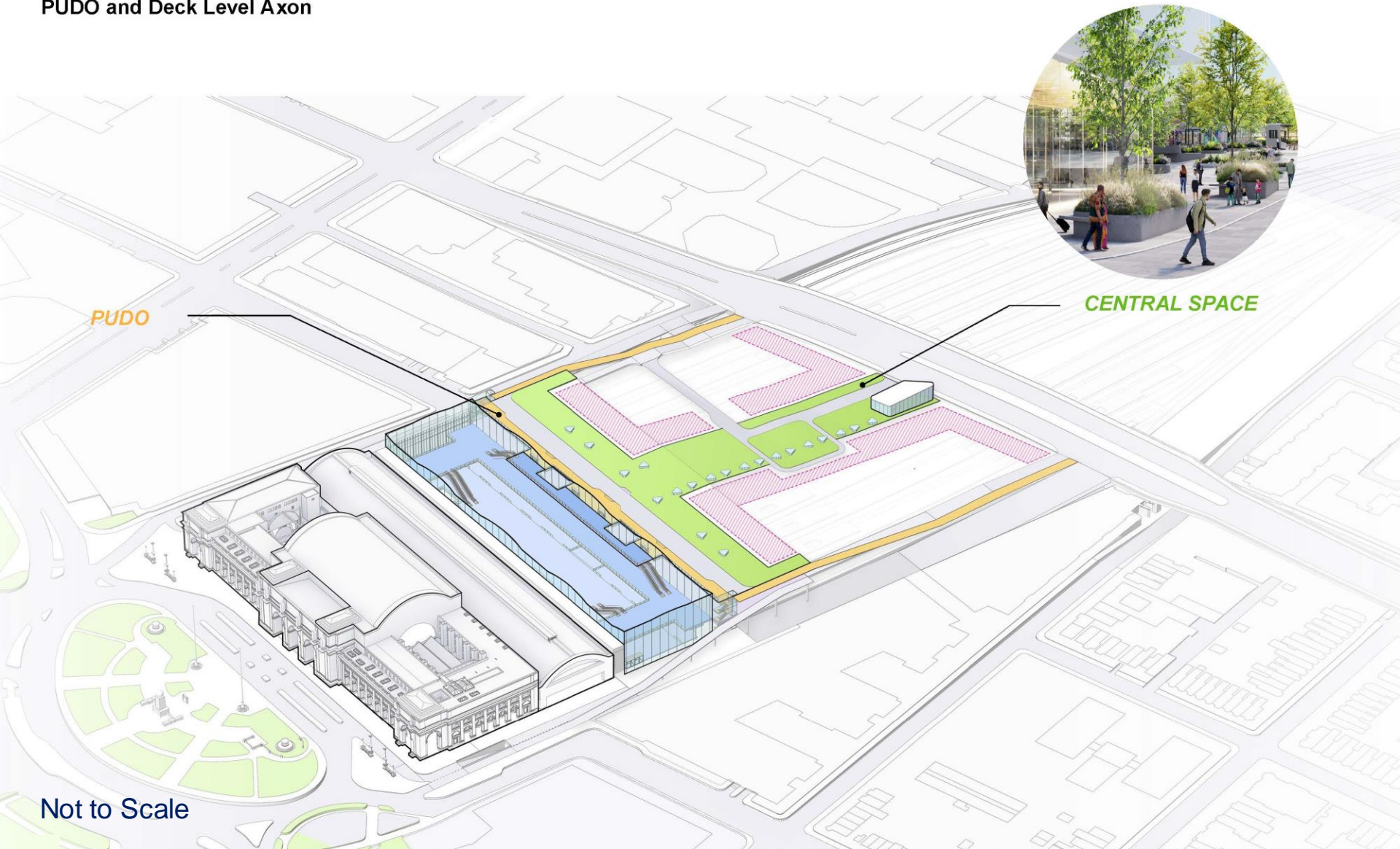
Preferred Alternative

Train Hall - Looking Northwest



Preferred Alternative

PUDO and Deck Level Axon



Not to Scale

Preferred Alternative

PUDO - Looking west



Preferred Alternative

Central Space - View from H Street Bridge, looking south to Station



Impact Areas Considered

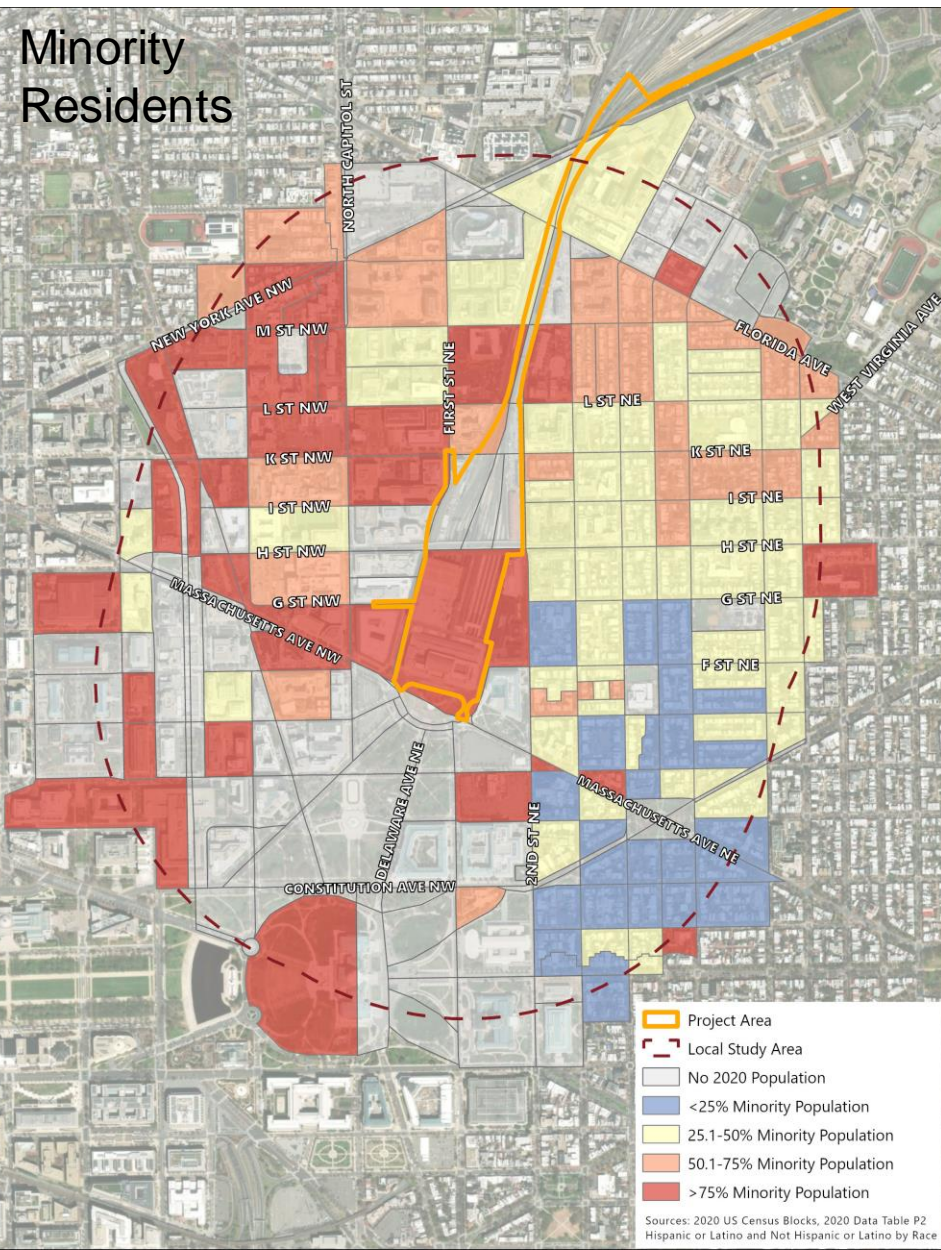


Impact Areas

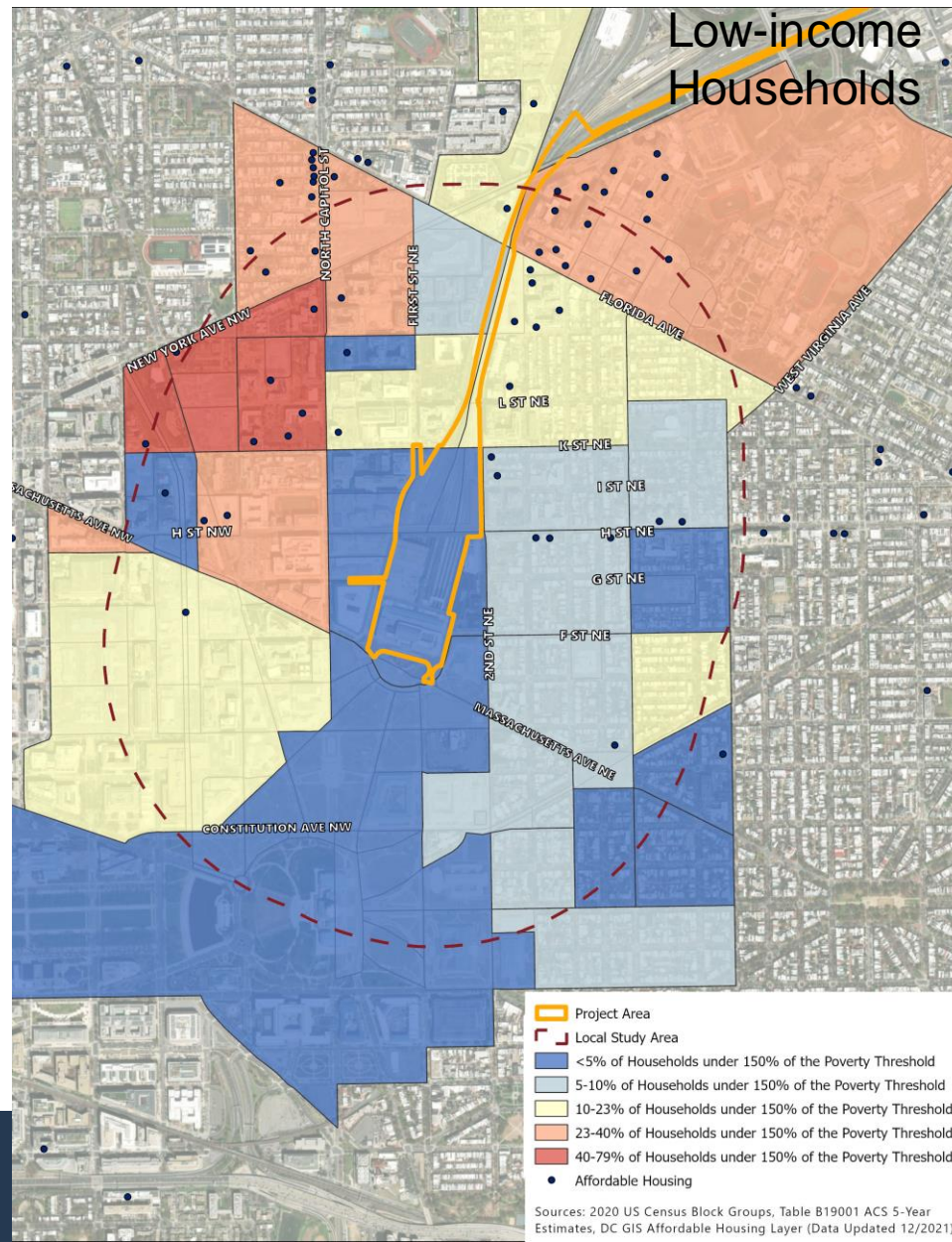
- Environmental Justice
- Natural ecological systems
- Water resources and water quality
- Solid waste disposal and hazardous materials
- Transportation
- Air Quality
- Noise and vibration
- Aesthetics and visual quality
- Cultural resources
- Parks and recreation areas
- Greenhouse gas emissions and resilience
- Energy resources
- Land use, land planning, and property
- Public safety and security
- Public health, elderly, and persons with disabilities

Environmental Justice

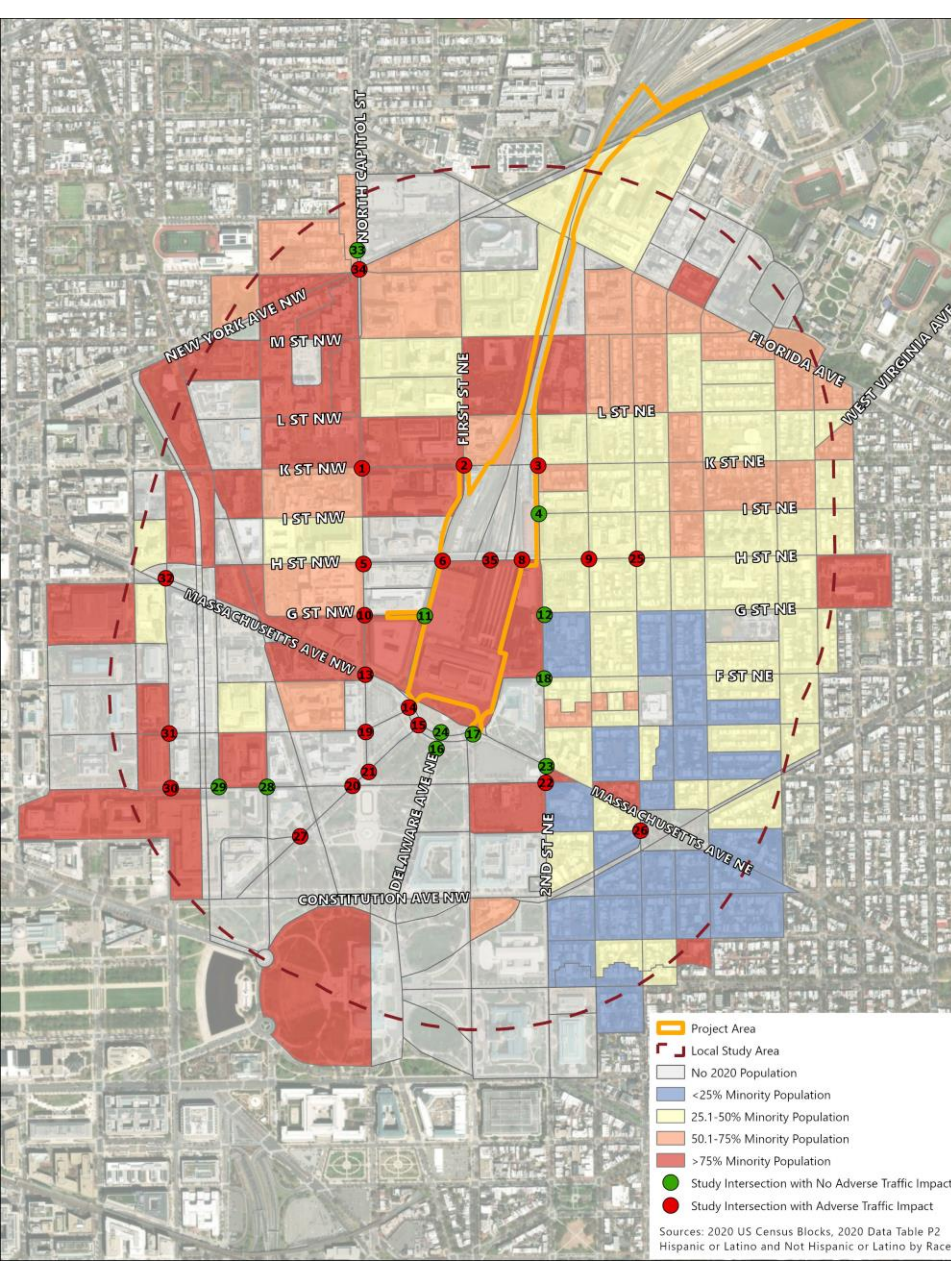
Minority Residents



Low-income Households



Potential Environmental Justice Impacts



Coordination is ongoing with the District Department of Transportation to define mitigation measures



U.S. Department of Transportation
Federal Railroad Administration

Discussion



Discussion Questions

- What are your commutes around the project area?
- How might your commute or other travels be impacted by this project?
- What actions can help alleviate impacts?

Next Steps



Next Steps

- Please share any contact information for any other community leaders and representatives that should be included in this information sharing and comment receiving process.
- We will be sharing more information about pop-ups and events that project information will be shared as it becomes available.